

# Installation

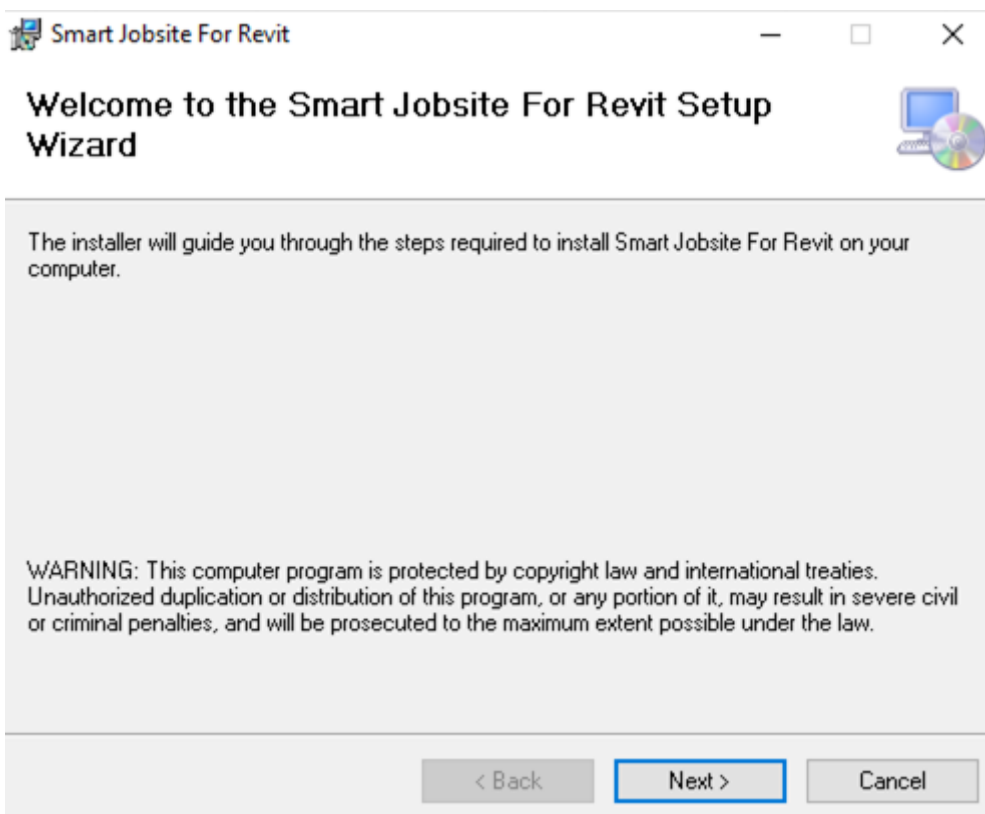
- Installation

# Installation

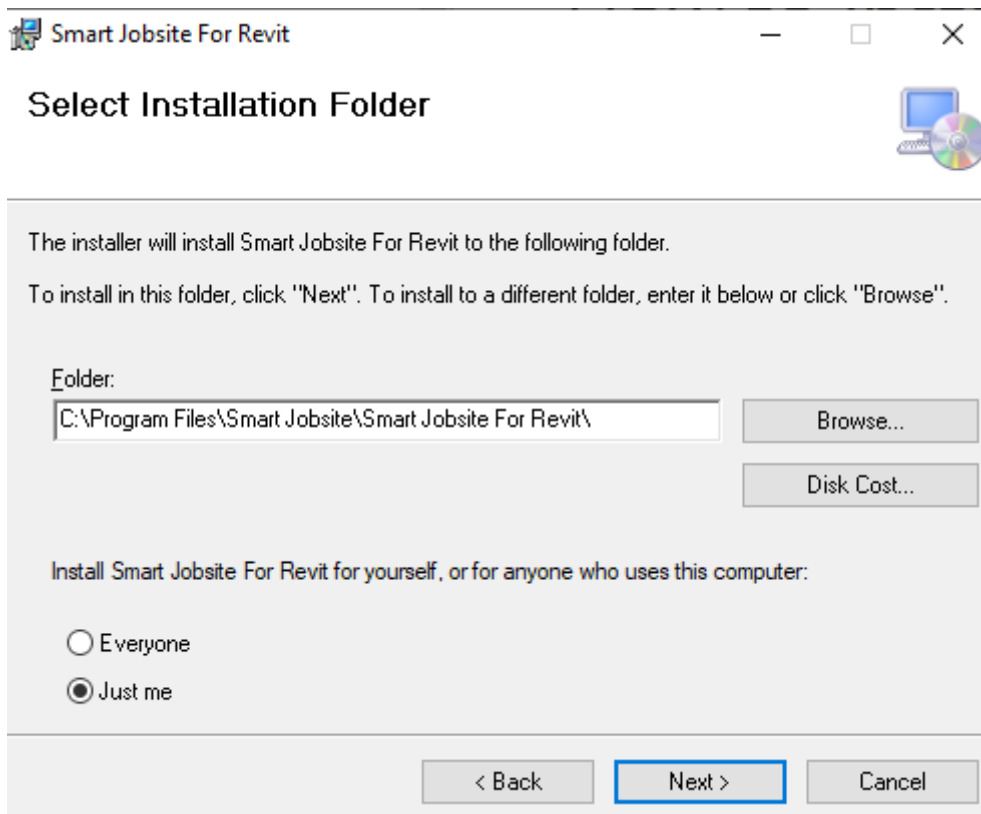
## How to install Smart Jobsite For Revit?

To install the Smart Jobsite For revit Add-on you need to execute the msi as explained bellow

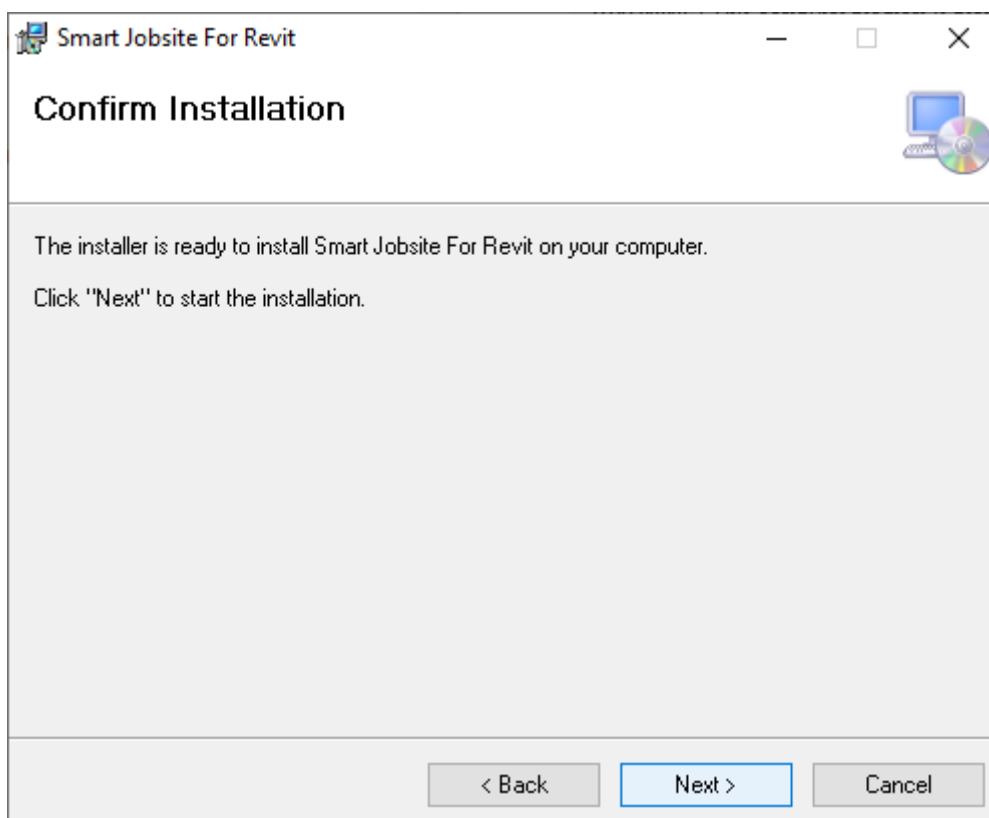
### Launch the Smart Jobsite For Revit.msi



Click on next



Select the installation path and click on next



Confirm the installation by clicking on Next. If a pop-up window asks for validation, click Yes.

## Installation Complete



Smart Jobsite For Revit has been successfully installed.

Click "Close" to exit.

Please use Windows Update to check for any critical updates to the .NET Framework.

< Back

Close

Cancel

The installation is complete you can click on Close