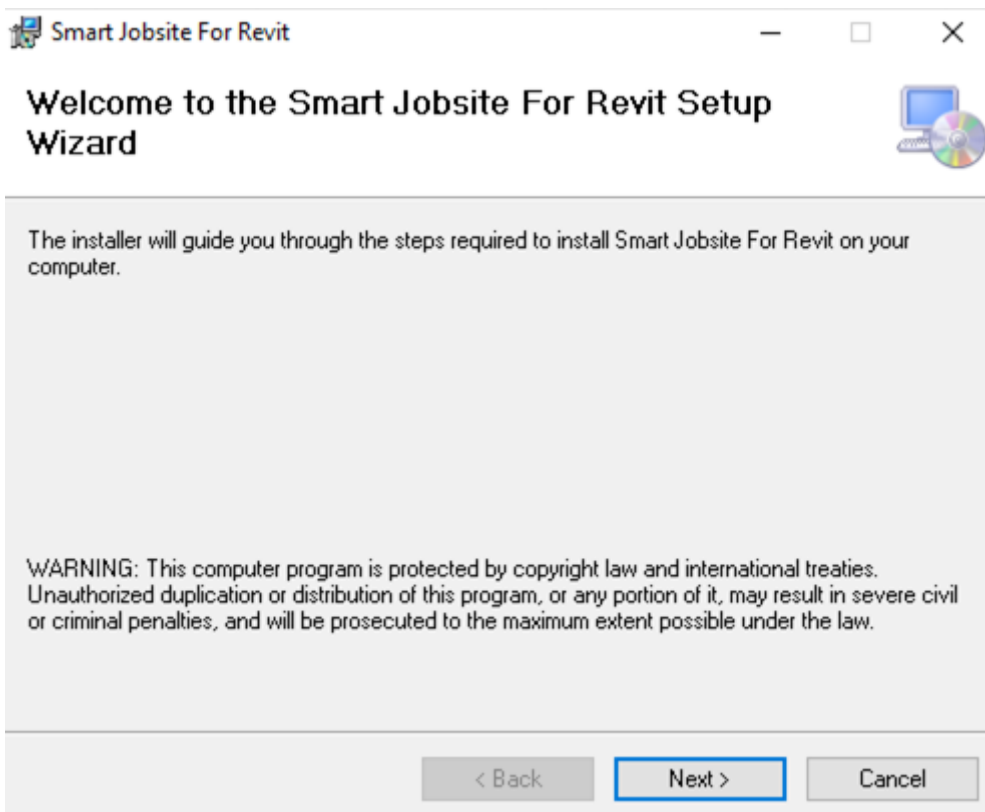


Installation

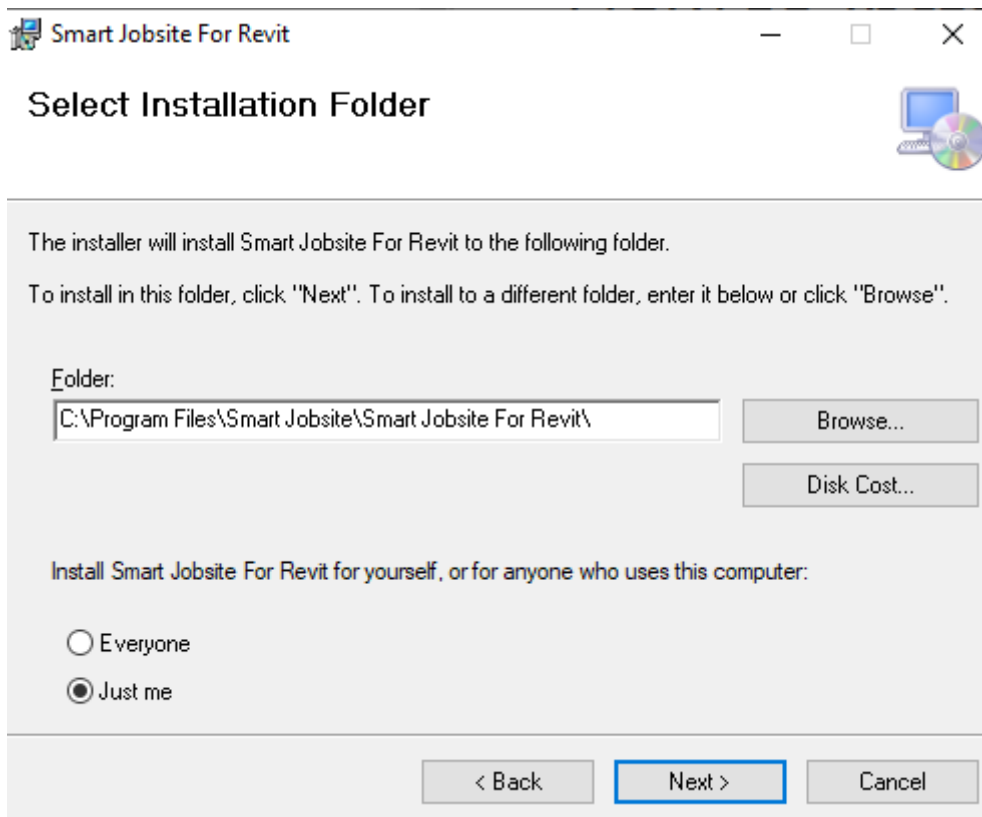
How to install Smart Jobsite For Revit?

To install the Smart Jobsite For revit Add-on you need to execute the msi as explained bellow

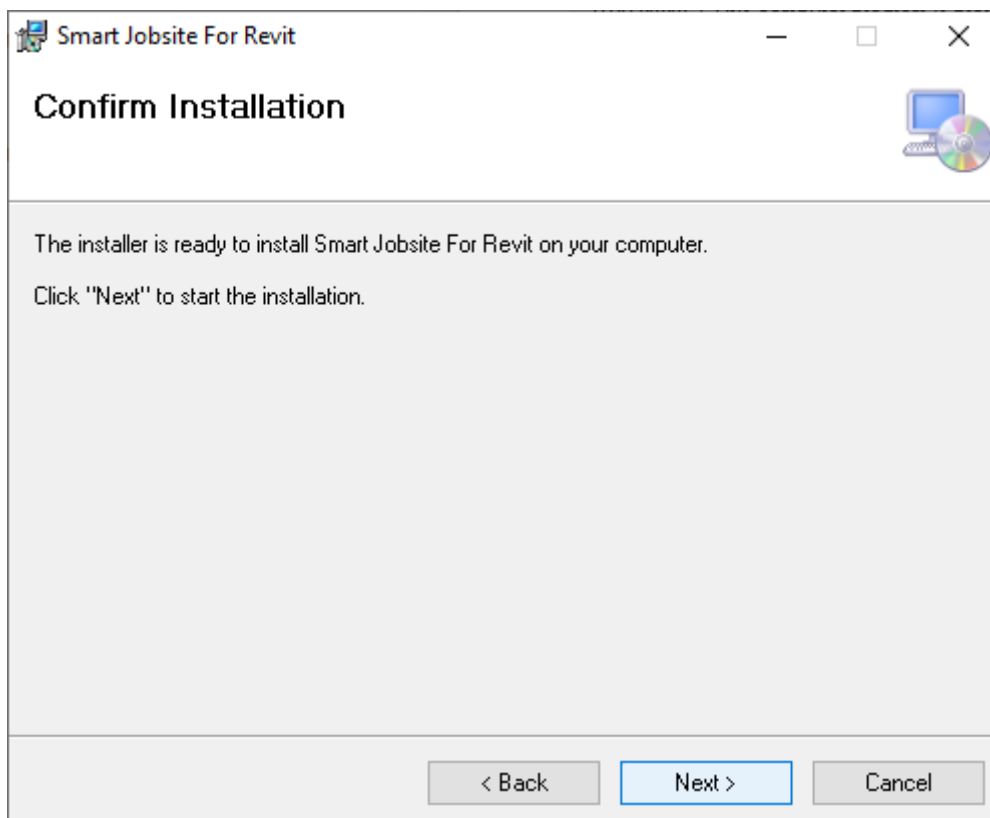
Launch the Smart Jobsite For Revit.msi



Click on next



Select the installation path and click on next



Confirm the installation by clicking on Next. If a pop-up window asks for validation, click Yes.

Installation Complete



Smart Jobsite For Revit has been successfully installed.

Click "Close" to exit.

Please use Windows Update to check for any critical updates to the .NET Framework.

< Back

Close

Cancel

The installation is complete you can click on Close

Revision #4

Created 1 December 2020 18:21:50 by Kevin

Updated 2 December 2020 08:42:26 by Chakib