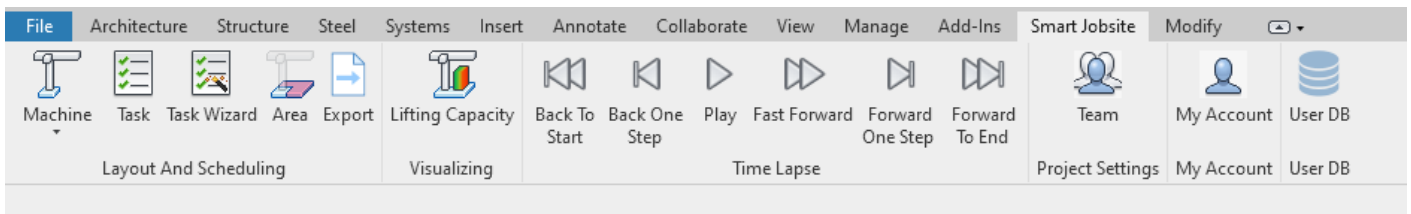


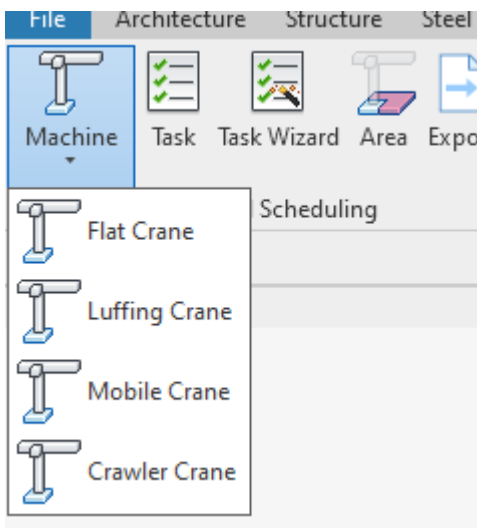
Machine

How to manage machines with Smart Jobsite For Revit?

- Create a crane



On the Smart Jobsite Tab click on the "Machine" drop down



You can choose between 4 types of machines, Flat crane, Luffing crane, mobile crane and Crawler crane

If you click on a crane type you will access the following panel

Flat Crane

C1

✓ ✗

Configuration

Brand Smart Jobsite

Model Generic Flat Crane

Height 25 m

Jib Length 25 m

Counter Jib Length 10 m

Fall 2

Slew Angle 0.00

Radius 5

Hook Height 25

Jack-Up ☐

Translation ☐

Location

Capacity

Installation date


Flat Crane Project Browser - SmartJobsiteOfficeSingleBuilding.rvt

Under configuration you can manage :

- The Brand and Model of the crane, you have acces to a huge database of cranes.
- The crane geometry : height, length, counter jib length, number of fall
- The crane position : slew angle, radius, hook height.

The configurations changes will be visible on the 3D view

Flat Crane

 C1

✓

✗

Configuration

▼

Location

▲

Latitude

43.73591100

▲▼

Longitude

5.19969400

▲▼

Altitude

35.97

▲▼

Angle to the north

0.00

▲▼

Capacity

▼

Installation date

▼

Under Location you can change the location of you crane using GPS coordinates. You will see the changes on the 3D view

Configuration ⌵Location ⌵Capacity ⬆

Load Chart

Calculation

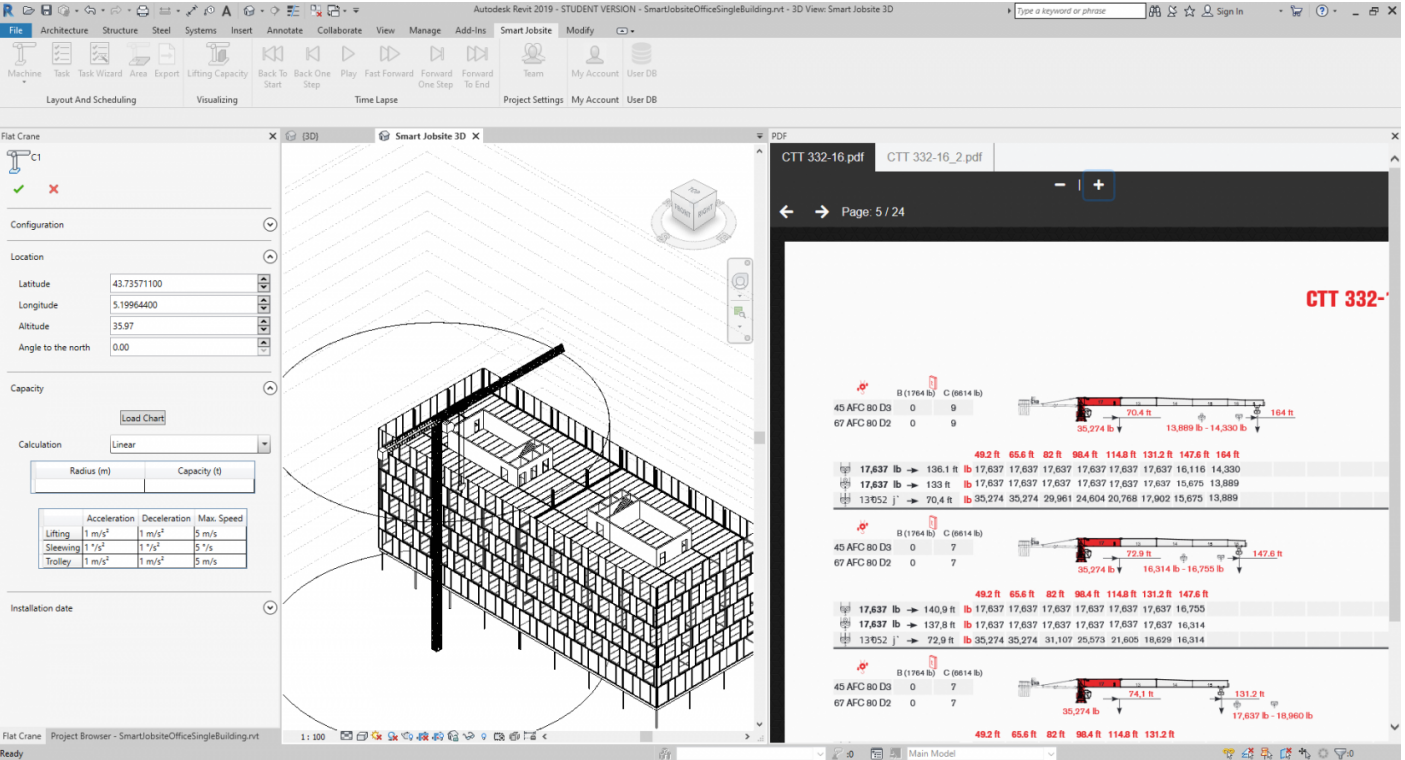
Linear ⌵

Radius (m)	Capacity (t)
10	30
20	20
25	15

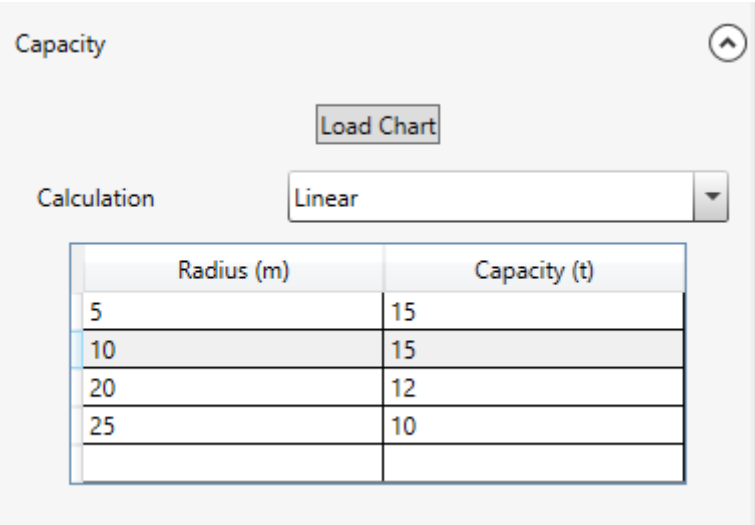
	Acceleration	Deceleration	Max. Speed
Lifting	1 m/s ²	1 m/s ²	5 m/s
Slewing	1 °/s ²	1 °/s ²	5 °/s
Trolley	1 m/s ²	1 m/s ²	5 m/s

Installation date ⌵

Under Capacity you can manage your load chart. If you click on the "Load Chart" button you will have access to the load chart and have the crane you choose on the configuration part (Brand and model).



Thanks to this you can enter the right value on the load chart table



You can change the calculation method.
If you choose Linear we will consider that the weight is linear between two points
If you choose step we will consider that the capacity change every step you defined on the table

The load chart data will be used to calculate the lifting capacity

Under Installation date you can manage the installation date of you crane

Flat Crane

C1

✓ ✗

Configuration

Location

Capacity

Installation date

Planned Installation Date 12/01/2020 15

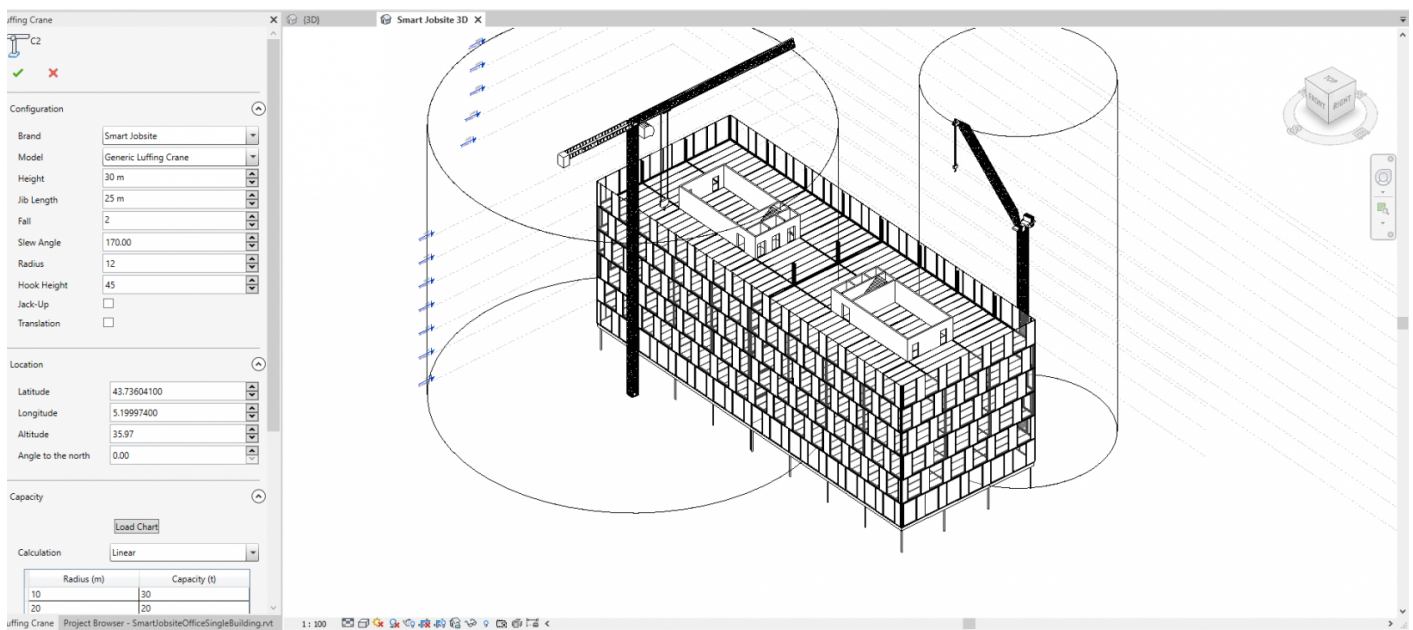
Actual Installation Date 12/01/2020 15

Planned Dismantle Date 12/01/2020 15

Actual Dismantle Date 12/01/2020 15

The dates you setup will be use to define the schedule

You can add as many cranes as you want and try different jobsite configuration



Revision #4

Created 1 December 2020 20:34:03 by Kevin

Updated 1 December 2020 21:05:43 by Kevin