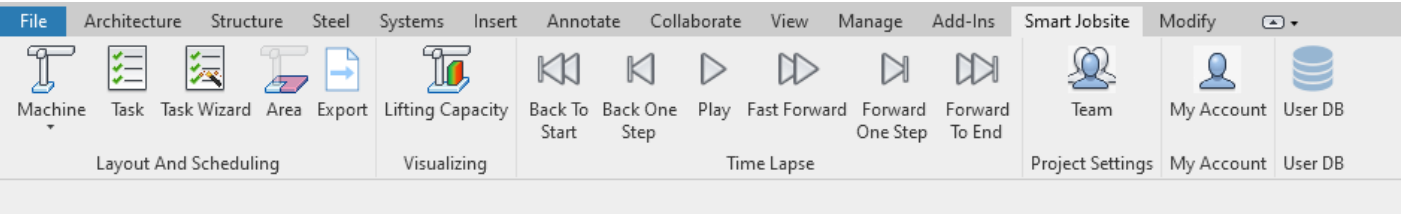


# Setup the working hours

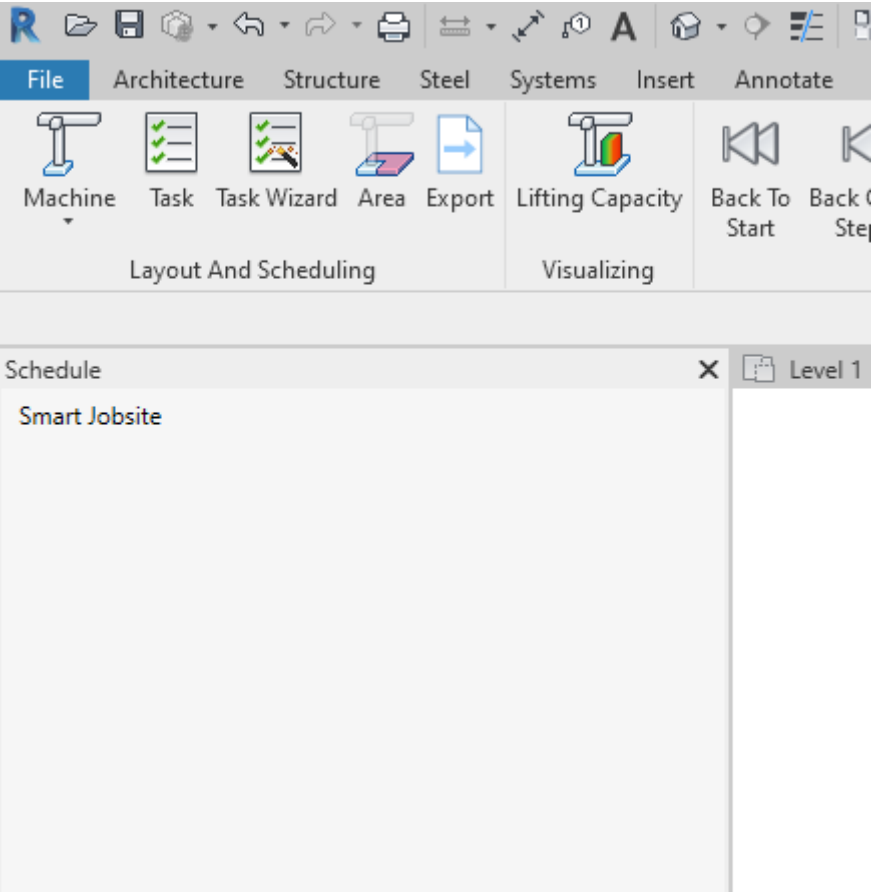
## How to setup the jobsite working hours?

Smart Jobsite does not create tasks using a schedule. We create a sequence of tasks and the dates of each task are calculated according to different parameters such as the working hours of the construction site, the weather or delivery conditions etc... That's why it's important to clearly define the working hours of the construction site.

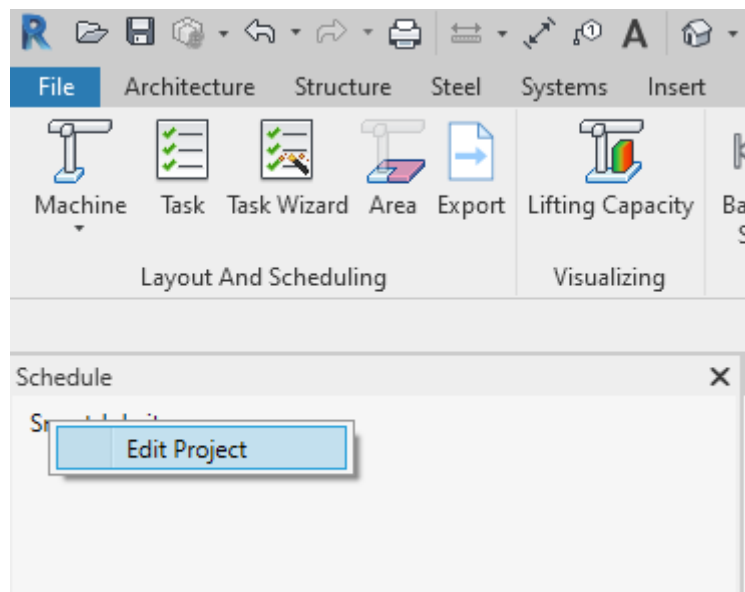
You can edit the working hours by clicking on the Smart Jobsite Tab




You will have acces to the Schedule Panel



You can "right click" on you project name and click on "Edit project"



Project

Project

☒ ☐

Name

Smart Jobsite

Planned Date

Tuesday, 01 December 2020

15

Location

Working Hours

Monday ☒

Start

08:00

End

18:00

Tuesday ☒

Start

08:00

End

18:00

Wednesday ☒

Start

08:00

End

18:00

Thursday ☒

Start

08:00

End

18:00

Friday ☒

Start

08:00

You will access the project settings. Under "Working Hours" you can setup the working days and hours for your jobsite.

Revision #1

Created 1 December 2020 19:45:32 by Kevin

Updated 1 December 2020 19:54:07 by Kevin